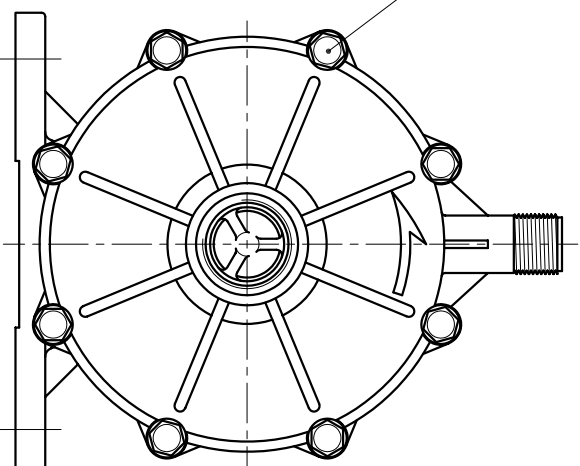
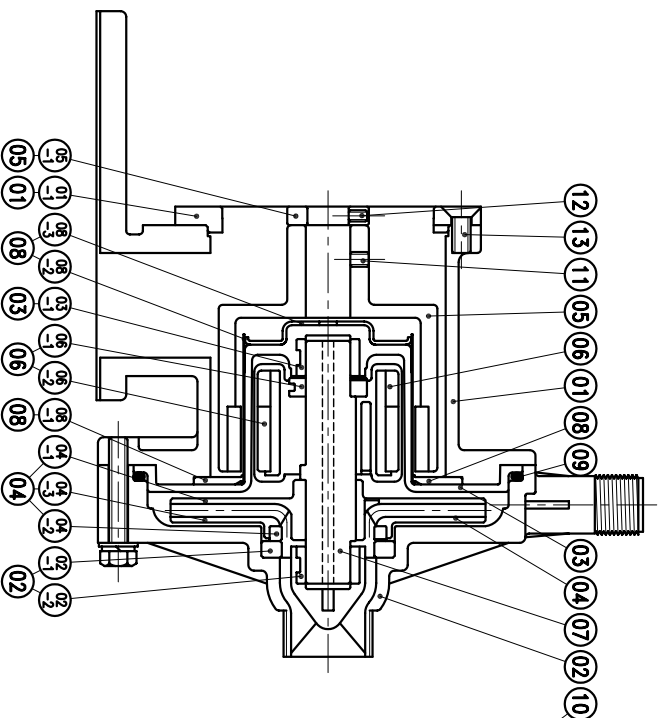


04	IMPELLER ASS'Y	1	PPS	3013PH	A2408448	08	REAR CASING COVER	1	08-1,-2,-3	Ø145X88	A2118458	14	HEXAGON SOCKET BOLT	4	SUS304	3/8"-13X1"	
03-1	BEARING	1	CARBON	Ø34X20	A2228471	07	SPINDLE	1	CERAMIC	Ø30X131	A2338425	13	COUNTER SUNK HEAD BOLT	4	S435	M10X20	P9119375
			SIC														
03	REAR CASING	1	PPS	Ø210X90	A2308468	06-2	DRIVEN MAGNET	1	Nd-Fe-B	Ø76X56.5	A2448446	12	SET SCREW	2	S435	M6X10	P9116430
			CARBON	Ø34X20	A2228471				SIC	Ø42X10	A2328424	11	SET SCREW	2	S435	M8X10	P9119160
02-2	BEARING	1	SIC			06-1	REAR THRUST PAD	1	CERAMIC			10	HEXAGON HEAD BOLT	8	SUS304	M10X60	P9113080
			CERAMIC	Ø72X9	P2229315				PPG	Ø79.6X63.5	A2438435						
02-1	FRONT THRUST PAD	1	SIC			05-1	MAGNET CAPSULE	1	S45C	Ø44X10	P2579340	09	O. RING	1	FKM	Ø139.3XØ5.7	G200
			PPS	Ø226.5X103.5	A2208508				FCD-45	Ø118X133	A2508500						
01-1	TRANSITION FLANGE	1	FC-20	Ø165.1X14	P2179302	04-3	SHLOUD	1	PPS	Ø170X13	A2458421	08-3	COVER	1	SPCC	Ø91.4X12.5	A2118470
			FC-20	Ø226.5X140	A2128501				PPS	Ø63X8	P2429006						
01	BRACKET	1	FC-20	Ø226.5X140	A2128501	04-2	MOUTH RING	1	RULON	Ø63X8	P2429006	08-1	BACK UP RING	1	SUS304	Ø145X5	A2118473
NO	PART NAME	Q'TY	MATERIAL	NOTE	DWG. NO.	NO	PART NAME	Q'TY	MATERIAL	NOTE	DWG. NO.	NO	PART NAME	Q'TY	MATERIAL	NOTE	DWG. NO.



(NEMA)

APPROVED		MDL NAME	NH-3013PH (2.2kW)
CHECK	11 14 03	DWG. NAME	CONSTRUCTION DRAWING
DESIGN	11 14 03	DWG. NO.	E2308396
DR.BY	11 14 03 BECKY		A3

TPW
HONG YUAN



PAN WORLD CO., LTD.
パンワールド株式会社