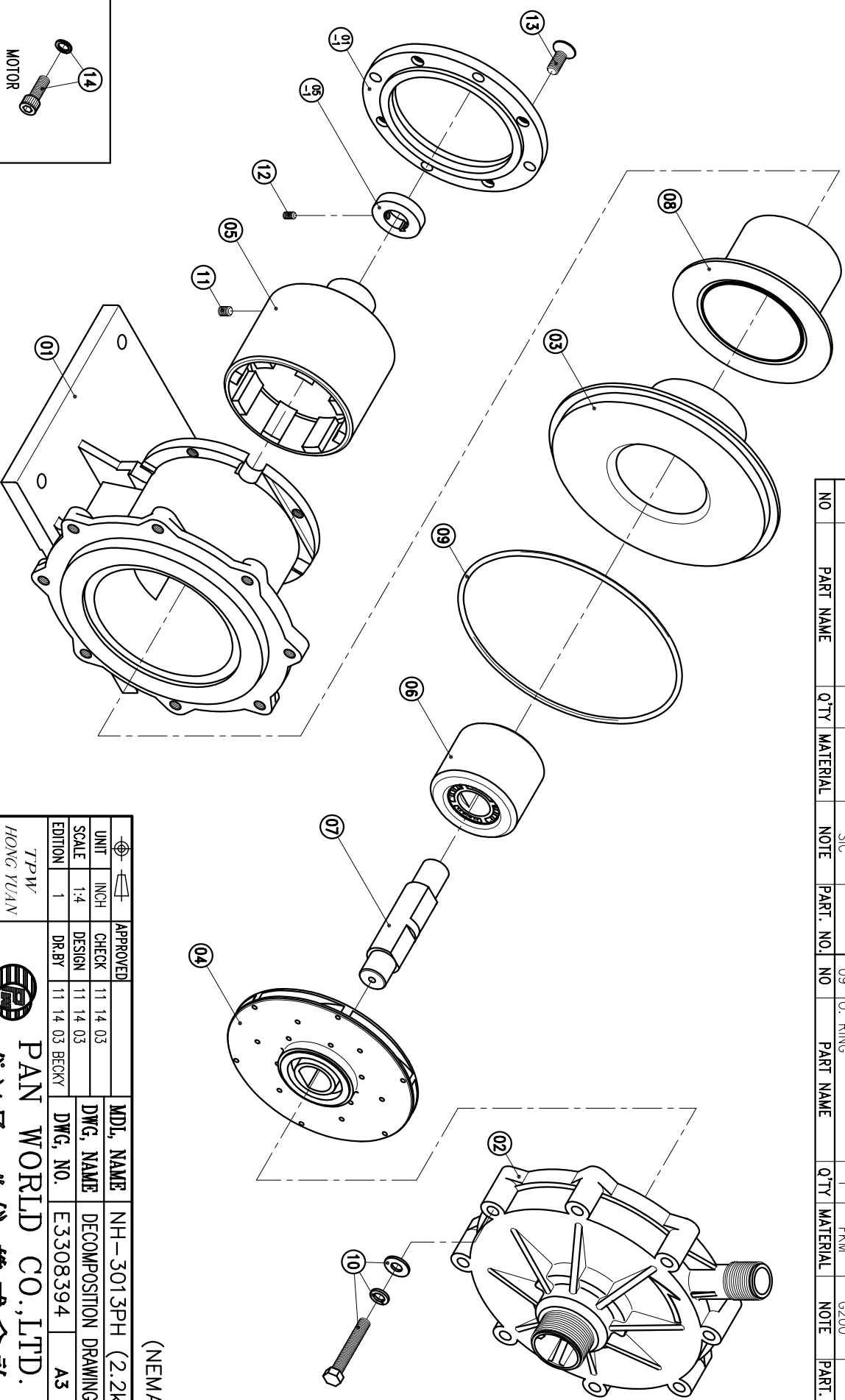


02	FRONT CASING	1	PPS	THRUST PAD: CERAMIC BEARING: CARBON THRUST PAD: SIC		
01-1	TRANSITION FLANGE	1	FC-20	φ165.1X14		
01	BRACKET	1	FC-20	φ226.5X140		

08	REAR CASING	1	SUS304	φ145X88			14	HEXAGON SOCKET BOLT	4	SUS304	3/8"-16X1"
07	SPINDLE	1	CERAMIC SIC	φ30X131			13	COUNTER SUNK HEAD BOLT	4	S435	M10X20
06	MAGNET CAPSULE	1	PPG	φ79.6X63.5			12	SET SCREW	2	S435	M6X10
05-1	RING	1	S45C	φ44X10			11	SET SCREW	2	S435	M8X10
05	DRIVE MAGNET	1	FCD-45	φ118X133			10	HEXAGON HEAD BOLT w/1 SPRING WASHER	8	SUS304	M10X60
04	IMPELLER ASS'Y	1	PPS	φ3013PH CARBON			09	w/1 PLAN WASHER O. RING	1	FKM	G200
03	REAR CASING	1	PPS	SIC							



APPROVED	11 14 03	MDL NAME	NH-3013PH (2.2kW)
CHECK	11 14 03	DWG. NAME	DECOMPOSITION DRAWING
DESIGN	11 14 03	DWG. NO.	E3308394
DR.BY	11 14 03 BECKY		A3

TPW
HONG YUAN



PAN WORLD CO., LTD.
パンワールド株式会社

(NEMA)