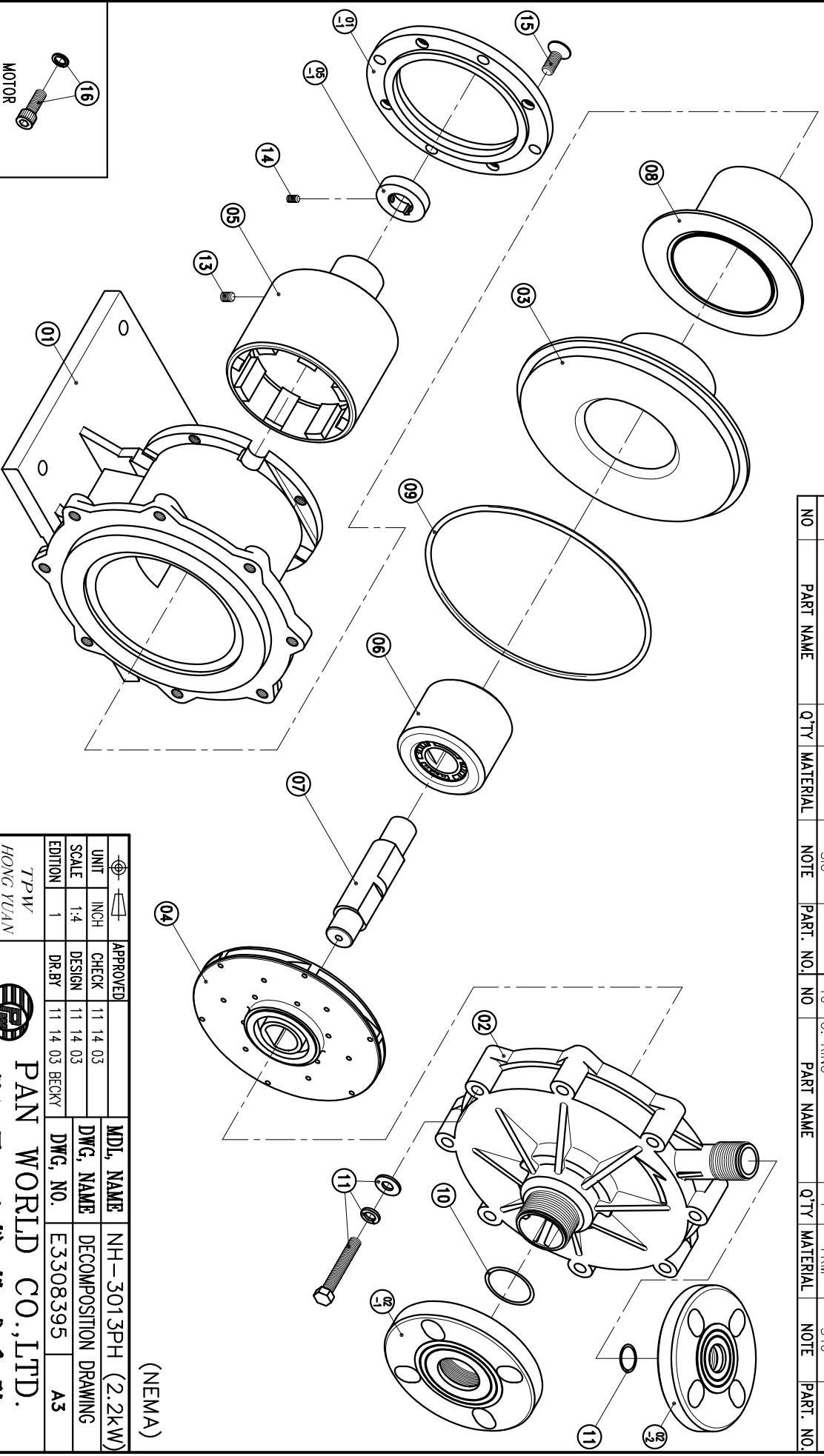


02-2	FLANGE	1	PPG	25A	1001007100	09	O. RING	1	FKM	G200	16	HEXAGON SOCKET BOLT w/1 SPRING WASHER	4	SUS304	3/8"-16X1"
02-1	FLANGE	1	PPG	40A		08	REAR CASING COVER	1	SUS304	φ145X88	15	COUNTER SUNK HEAD BOLT	4	S435	M10X20
02	FRONT CASING	1	PPS	BEARING-CARBON THRUST PAD-SIC		07	SPINDLE	1	CERAMIC SIC	φ30X131	14	SET SCREW	2	S435	M6X10
01-1	TRANSITION FLANGE	1	FC-20	φ165.1X14		06	MAGNET CAPSULE	1	PPG	φ79.6X63.5	13	SET SCREW	2	S435	M8X10
01	BRACKET	1	FC-20	φ226.5X140		05-1	RING	1	S45C	φ44X10	12	HEXAGON HEAD BOLT w/1 SPRING WASHER w/1 PLAIN WASHER	8	SUS304	M10X60
						05	DRIVE MAGNET	1	FCD-45	φ118X133					
						04	IMPELLER ASS'Y	1	PPS	3013PH CARBON SIC					
						03	REAR CASING	1	PPS		11	O. RING	1	FKM	S24
											10	O. RING	1	FKM	S40



(NEMA)

APPROVED	11 14 03	CHECK	11 14 03
MDL NAME	NH-3013PH (2.2kW)		
DWG. NAME	DECOMPOSITION DRAWING		
DWG. NO.	E3308395	DR.BY	11 14 03 BECKY
EDITION	1	SCALE	1:4
UNIT	INCH	SCALE	1:4

TPW
HONG YUAN


PAN WORLD CO.,LTD.
 パンワールド株式会社