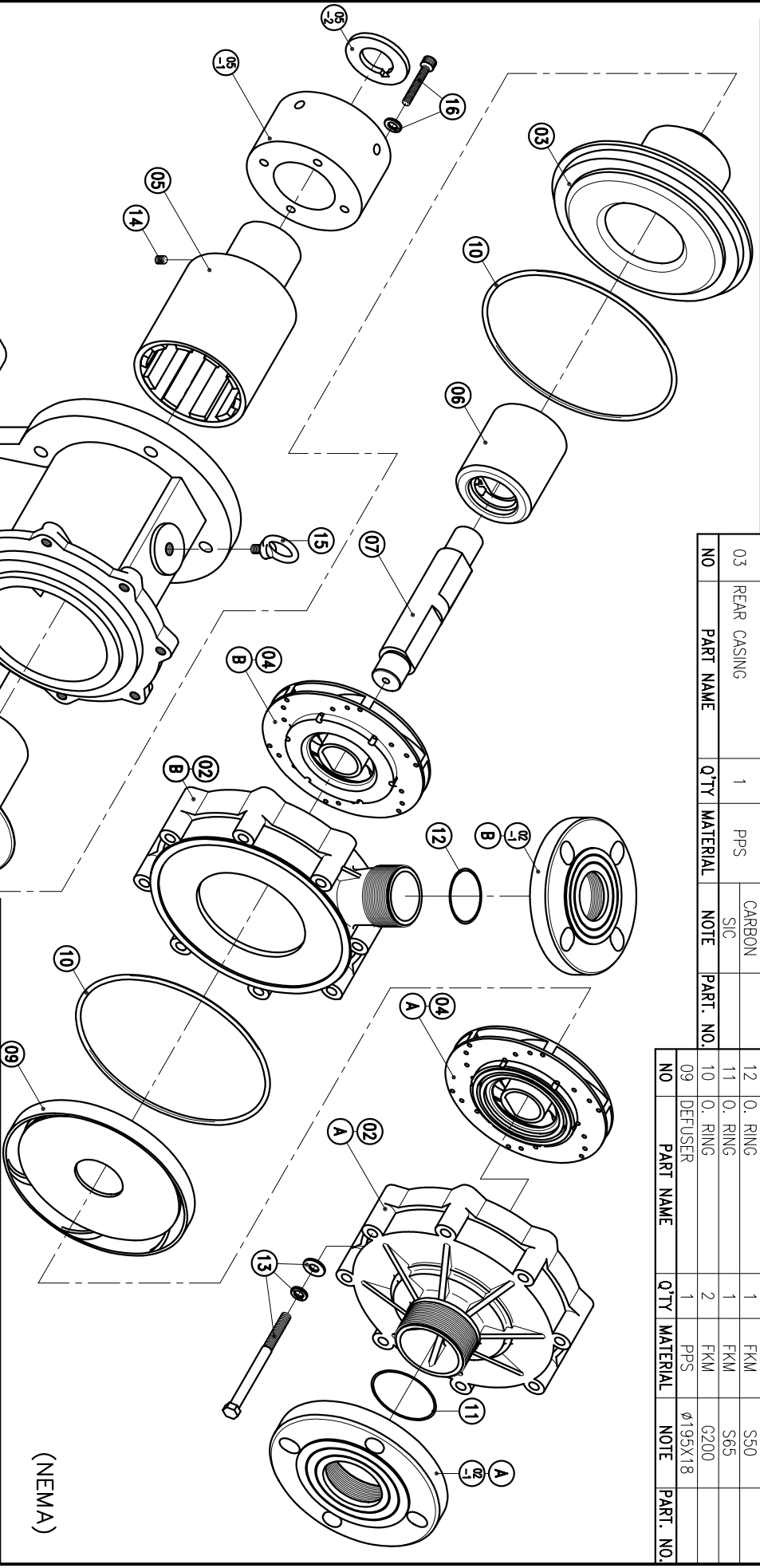
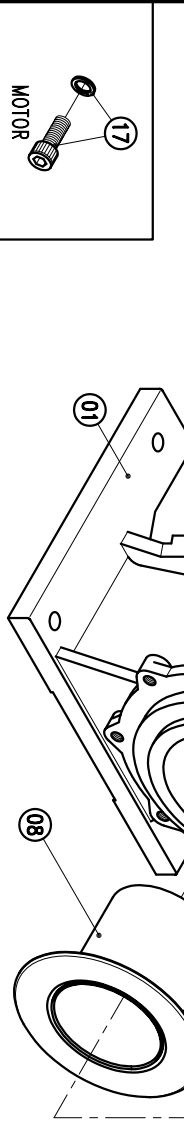


02-1	FLANGE	1	PPG	50A		08	REAR CASING COVER	1		0158X121	17	HEXAGON SOCKET BOLT	4	SUS304	1/2"-13x1 1/4"
02-B	CASING-2ND	1	PPS	φ226.5X59.5		07	SPINDLE	1	CERAMIC	φ38X198	16	HEXAGON SOCKET BOLT	4	SUS304	M8X60
02-1	FLANGE	1	PPG	65A		06	MAGNET CAPSULE	1	PPG	φ79.6X92	15	EYE BOLT	1	S41C	M12X20
02-A	FRONT CASING-1ST	1	PPS	THRUST PAD: CERAMIC BEARING: CARBON THRUST PAD: SIC		05-2	RING	1	S45C	φ65.45.7	14	SET SCREW	2	S435	M8X10
01	BRACKET	1	FC-20	φ226.5X205		05-1	FLY WHEEL	1	S45C	φ122X68	13	HEXAGON HEAD BOLT	8	SUS304	M10X120
						05	DRIVE MAGNET	1	FOD-45	φ122X199	12	O. RING	1	FKM	SG0
						04-B	IMPELLER ASS'Y-2ND	1	PPS	5024PH	11	O. RING	1	FKM	SG5
						04-A	IMPELLER ASS'Y-1ST	1	PPS	5024PH	10	O. RING	2	FKM	G200
						03	REAR CASING	1	PPS	CARBON SIC	09	DEFUSER	1	PPS	φ195X18

NO	PART NAME	Q'TY	MATERIAL	NOTE	PART. NO.
03	REAR CASING	1	PPS	CARBON SIC	
04-A	IMPELLER ASS'Y-1ST	1	PPS	5024PH	
04-B	IMPELLER ASS'Y-2ND	1	PPS	5024PH	
05	DRIVE MAGNET	1	FOD-45	φ122X199	
05-1	FLY WHEEL	1	S45C	φ122X68	
05-2	RING	1	S45C	φ65.45.7	
06	MAGNET CAPSULE	1	PPG	φ79.6X92	
07	SPINDLE	1	CERAMIC	φ38X198	
08	REAR CASING COVER	1		φ158X121	
09	DEFUSER	1	PPS	φ195X18	



(NEMA)



APPROVED	10 27 03	MDL NAME	NH-5024PH (7.5KW)
CHECK	10 27 03	DWG. NAME	DECOMPOSITION DRAWING
DESIGN	10 27 03	DWG. NO.	E3508361
DR.BY	10 27 03 BECKY		A3

TPW
HONG YUAN

PAN WORLD CO., LTD.
パンワールド株式会社