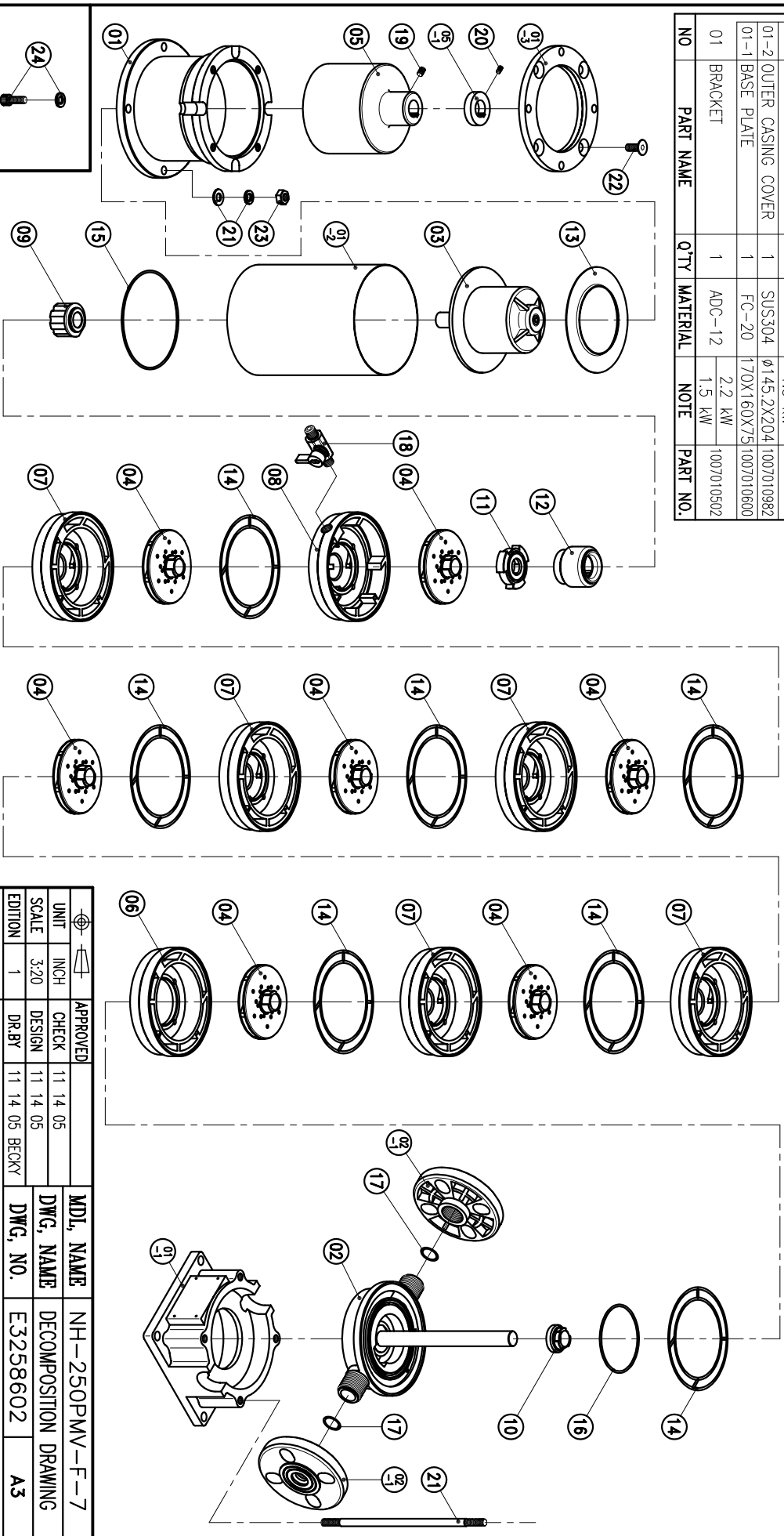


07	MID CASING	5	ETFE	φ143X40	1007010420	16	O. RING	1	FKM	G30	1007012701	24	HEXAGON SOCKET BOLT w/ t S.W.(3/8") (MOTOR)	4	SUS304	3/8" - 16X1"
06	FRIST CASING	1	ETFE	φ143X32.5	1007010421	15	O. RING	1	FKM	G130	1007012700	23	NUT	4	SUS304	M10
05-1	RING	1	S45C	2.2 kW		14	CHAMBER GASKET	7	FKM	φ129.4Xφ3.1	1007010300	22	COUNTER SUNK HEAD BOLT	4	S45C	M8X25
05	OUTER DRIVE RING	1	FOD-45	2.2 kW	1007010720	12	INNER DRIVE RING	1	Nd-Fe-B	2.2 kW	1007112353	21	STUD BLOT w/ t P.W. + S.W. (M10)	4	SUS304	M10X260
04	IMPELLER ASS'Y	7	ETFE		1007010410	11	CLUTCH	1	ETFE	φ58X12.5	1007010400	20	SET SCREW	2	S45C	M6X10
03	REAR CASING ASS'Y	1	ETFE	φ139X93.3	1007010202	10	FRONT THRUST BEARING	1	ETFE	φ56X18	1003010811	19	SET SCREW	2	S45C	M8X10
02-1	FLANGE	2	ETFE	φ122X31	1001007100	09	BEARING ASS'Y	1	ETFE	φ44X31	1003010812	18	EXHAUST VALVE	1		
02	FRONT CASING	1	ETFE	210X48	1007012302	08	LAST CASING	1	ETFE	φ143X40	1007010422	17	O. RING	2	FKM	P20
01-3	TRANSITION FLANGE	1	FC-20	2.2 kW												
01-2	OUTER CASING COVER	1	SUS304	φ145.2X204	1007010982											
01-1	BASE PLATE	1	FC-20	170X160X75	1007010600											
01	BRACKET	1	ADC-12	2.2 kW	1007010502					1.5 kW						



APPROVED	CHECK	DESIGN	DR.BY	MDL. NAME	DWG. NAME	DWG. NO.
11 14 05	11 14 05	11 14 05	11 14 05	NH-250PMV-F-7	DECOMPOSITION DRAWING	E3258602
UNIT INCH			SCALE 3:20			
EDITION 1			DR.BY 11 14 05 BECKY			
A3			A3			

TPW
HONG YUAN

PAN WORLD CO., LTD.
パンワールド株式会社

MOTOR FLANGE