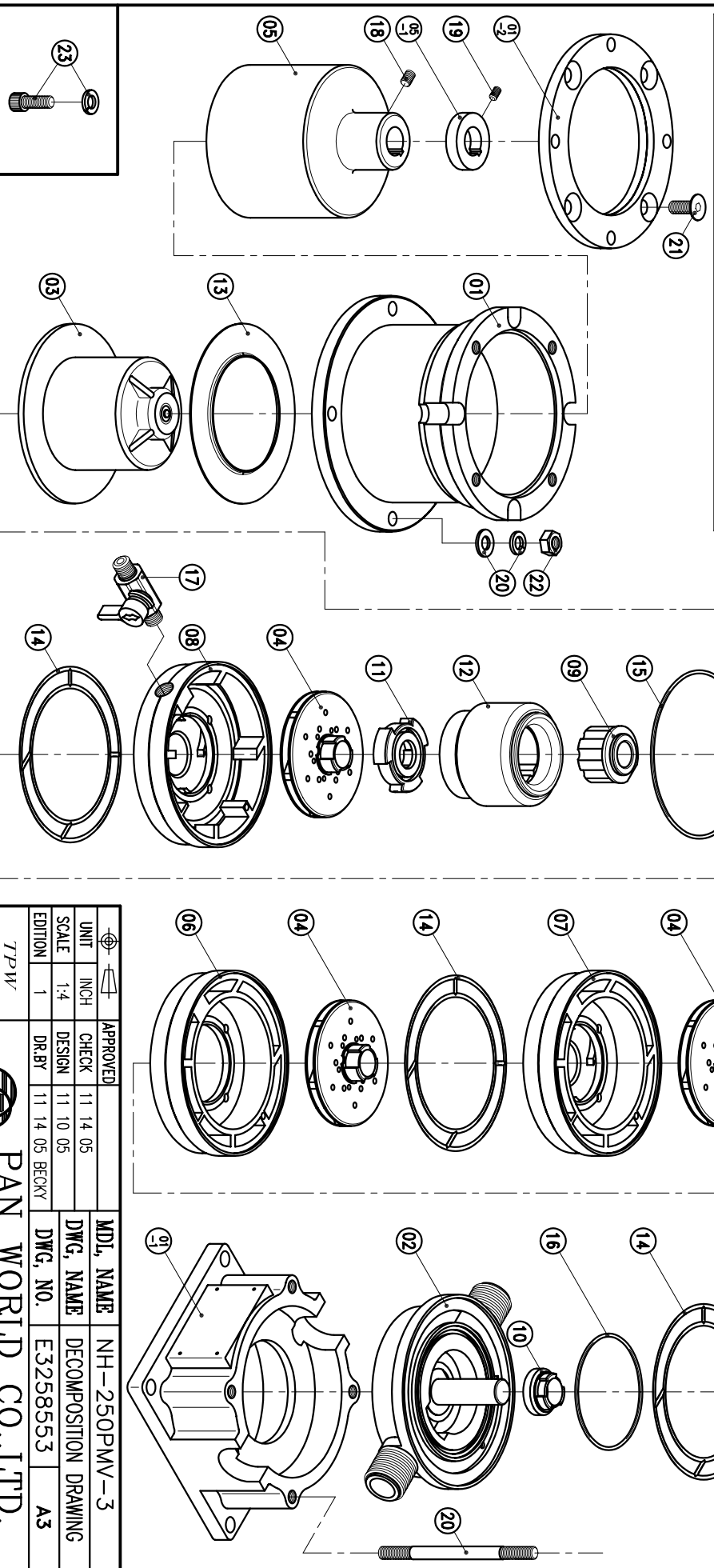


NO	PART NAME	Q'TY	MATERIAL	NOTE	PART NO.
05-1	RING	1	S45C	1.5 kW 0.75 kW 0.37 kW	
05	OUTER DRIVE RING	1	FCD-45 FCD-45 ADC-12	1.5 kW 0.75 kW 0.37 kW	1007010720 1003111800 1003011800
04	IMPELLER ASS'Y	3	PPS		1007010410
03	REAR CASING ASS'Y	1	PPS	$\phi 139 \times 93.3$	1007010200
02	FRONT CASING	1	PPS	210X48 1.5 kW 0.75 kW 0.37 kW	1007012300
01-2	TRANSITION FLANGE	1	FC-20		
01-1	BASE PLATE	1	FC-20		
01	BRACKET	1	ADC-12	170X160X75 0.75 kW 0.37 kW	1007010600 1007010501 1007010500
16	O. RING	1	FKM	G30	1007012701
15	O. RING	1	FKM	G130	1007012700
14	CHAMBER GASKET	3	FKM	$\phi 129.4 \times \phi 3.1$	
13	BACK UP RING	1	SPCC	$\phi 139 \times 4$	1007010300
12	INNER DRIVE RING	1	Nd-Fe-B Sr.FERRITE Bo.FERRITE	1.5 kW 0.75 kW 0.37 kW	1007112352 1003912371 1003912370
11	CLUTCH	1	PPS	$\phi 58 \times 12.5$	1007010400
10	FRONT THRUST BEARING	1	PPS	$\phi 36 \times 18$	1003010811
09	BEARING ASS'Y	1	ETFE	$\phi 44 \times 31$	1003010812
08	LAST CASING	1	PPS	$\phi 143 \times 40$	1007010422
07	MID CASING	1	PPS	$\phi 143 \times 40$	1007010420
06	FRST CASING	1	PPS	$\phi 143 \times 32.5$	1007010421
23	HEXAGON SOCKET BOLT w/t S.W.(3/8")(MOTOR)	4	SUS304	3/8" - 16X1"	
22	NUT COUNTER SUNK HEAD BOLT (0.75kW / 1.5kW)	4	SUS304	M10	
21	HEXAGON SOCKET BOLT w/t S.W.(M8)(0.37kW)	4	SUS304	M8X20	
20	STUD BLOT w/t P.W. + S.W. (M10)	4	SUS304	M10X145	1007010900
19	SET SCREW	2	S45C	M6X10	
18	SET SCREW	2	S45C	M8X10	
17	EXHAUST VALVE	1			



APPROVED	CHECK	DESIGN	DR.BY	MDL NAME	DWG. NAME	DWG. NO.
11 14 05	11 14 05	11 10 05	11 14 05 BECKY	NH-250PMV-3	DECOMPOSITION DRAWING	E3258553
UNIT INCH			SCALE 1:4			
EDITION 1			DRAWING NO. A3			

TPW
HONG YUAN

PAN WORLD CO.,LTD.
パンワールド株式会社