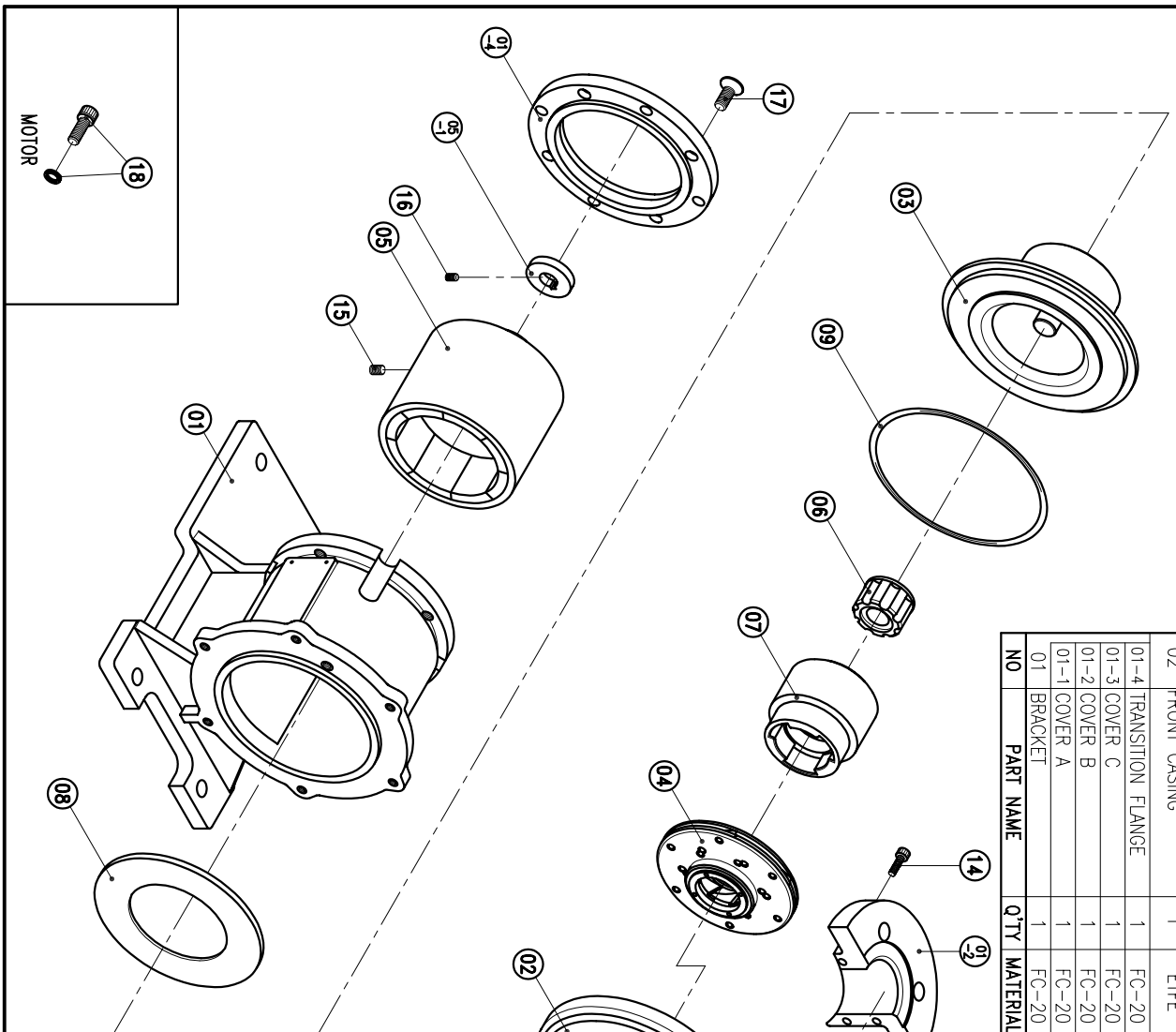



NO	PART NAME	Q'TY	MATERIAL	NOTE	PART NO.
05	OUTER DRIVE RING	1	FCD-45	φ123X127.5	1003111800
04	IMPELLER ASS'Y	1	ETFE		1004611314
03	REAR CASING	1	ETFE	SIC	1004610201
02	FRONT CASING	1	ETFE	CERAMIC SIC	1005611390 1005611300
01-4	TRANSITION FLANGE	1	FC-20	φ165, 1X16.4	
01-3	COVER C	1	FC-20	φ127X69	
01-2	COVER B	1	FC-20	φ127X19	1005611800
01-1	COVER A	1	FC-20	φ193X60	
01	BRACKET	1	FC-20	φ193X128	1004519101

NO	PART NAME	Q'TY	MATERIAL	NOTE	PART NO.
18	HEXAGON SOCKET BOLT w/t SPRING WASHER	4	SUS304	3/8"-16X1"	
17	COUNTER SUNK HEAD BOLT	4	S435	M8X25	
16	SET SCREW	2	S435	M6X10	
15	SET SCREW	2	S435	M8X10	
14	HEXAGON SOCKET BOLT	3	SUS304	M6X20	
13	HEXAGON SOCKET BOLT	2	SUS304	M6X16	
12	HEXAGON SOCKET BOLT	4	SUS304	M8X20	
11	HEXAGON SOCKET BOLT w/t SPRING WASHER	5	SUS304	M8X40	
10	HEXAGON SOCKET BOLT w/t SPRING WASHER w/t PLAIN WASHER	1	SUS304	M8X60	
09	O. RING	1	FKM	G160	1004511500
08	BACK UP RING	1	SUS304	φ150X5.5	1003011300
07	INNER DRIVE RING	1	ETFE	φ79.6X71	1004510814
06	BEARING ASS'Y	1	CERAMIC RULON CARBON	φ44X31	1004510813 1004510812 1004510811
05-1	RING	1	S45C	φ40X7.5	



APPROVED	10 16 02	MDL. NAME	NH-401PW-C (NEMA)
CHECK	07 14 97	DWG. NAME	DECOMPOSITION DRAWING
DESIGN	10 16 02	DWG. NO.	B3414683
DR.BY			A3

TPW
 HONG YUAN

PAN WORLD CO., LTD.
 パンワールド 株式会社