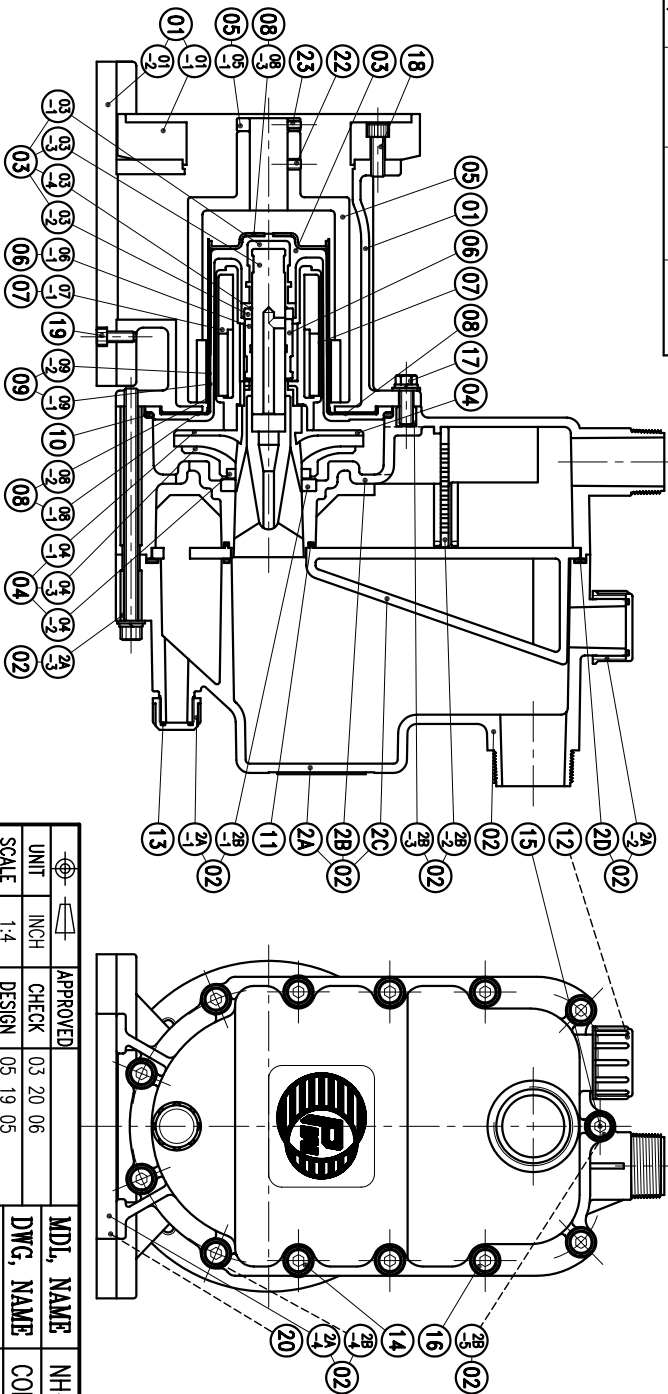


NO	PART NAME	QTY	MATERIAL	NOTE	DWG. NO.	NO	PART NAME	QTY	MATERIAL	NOTE	DWG. NO.	NO	PART NAME	QTY	MATERIAL	NOTE	DWG. NO.	
03-4	O. RING	1	FKM	φ24.4xφ3.1	G25	13	O. RING	1	FKM	φ19.8xφ2.4	P20	24	HEXAGON SOCKET BOLT	4	SUS304	1/2"-13X1"		
03-3	SPINDLE	1	CERAMIC	φ25X125	A2333752	12	O. RING	1	FKM	φ34.4xφ3.1	G35	23	SET SCREW	2	S435	M6X10	P9116430	
03-2	REAR THRUST PAD	1	CERAMIC	φ37X8	P2329184	11	O. RING	1	FKM	φ59.4xφ3.1	G60	22	SET SCREW	2	S435	M8X10	P9119160	
03-1	SPINDLE HOLDER	1	ETFE	φ41X131		10	O. RING	1	FKM	φ17.4.3xφ5.7	G175	21	NUT	13	SUS304	M10		
03	REAR CASING	1	PPG	φ186.5X140	A2303785	09-2	PTFE BOARD	1	PTFE	281.8X122.9	A2119713	20	HEXAGON SOCKET BOLT	2	SUS304	M6X20		
2D	GASKET	1	FKM	330.5X218X4.5	A9423724	09-1	PTFE BOARD	1	PTFE	278.6X122.9	A2119713	19	HEXAGON SOCKET BOLT	4	SUS304	M8X20		
2C	TELESCOPIC PIECE	1	PPG	323.5X211X88	A2273723	09	PTFE BOARD	2	PPG	LX122.9	A2119713	18	HEXAGON SOCKET BOLT	4	SUS304	M10X30		
2B-5	SLEEVE	1	SUS304	φ16X90	A9123742	08-3	COVER	1	SUS304	φ90.4X127.5	A2119716	17	HEXAGON HEAD BOLT	3	SUS304	M10X30		
2B-4	SLEEVE	6	SUS304	φ16X105	A9123743	08-2	PIPE	1	HASTELLOY	φ90.4X127.5	A2119716	16	HEXAGON SOCKET BOLT	6	SUS304	M10X90		
2B-3	SCREW	3	SUS304	M10X15	A9123743	08-1	BACK UP RING	1	SPCC	φ164X5.5	A2119714	15	HEXAGON SOCKET BOLT	1	SUS304	M10X165		
2B-2	FILTER	1	PPG	164X91X55	A2273790	08	REAR CASING COVER	1	PPG	φ164X137	A2119717	14	HEXAGON SOCKET BOLT	6	SUS304	M10X180		
2B-1	THRUST PAD	1	CERAMIC	φ72X9	P2229315	07-1	INNER MAGNET	1	Nd-Fe-B	φ76X9.3	P2449491	13	HEXAGON SOCKET BOLT	3	SUS304			
2B	REAR CASING CHAMBER	1	PPG	404X226X123	A2273722	07	INNER DRIVE RING	1	PPG	φ79.6X124	A2433787	12	HEXAGON SOCKET BOLT	6	SUS304			
2A-4	FOOT	1	PVC	170X45X15	A2173756	06-1	BEARING	1	CARBON	φ56X45	P2469773	11	HEXAGON SOCKET BOLT	1	SUS304			
2A-3	SLEEVE	13	SUS304	φ16X38	A9123742	06	BEARING ASS'Y	1	ETFE	φ44X46.5	A2463761	10	HEXAGON SOCKET BOLT	1	SUS304			
2A-2	FILLER CAP	1	PPG	φ55X30	A2279236	05-1	RING	1	S45C	φ48X9.8	P2579342	9	HEXAGON SOCKET BOLT	1	SUS304			
2A-1	DRAIN CAP	1	PPG	φ36X24	A2233731	05	OUTER DRIVE RING	1	FCD-45	φ122X205	P2509341	8	HEXAGON SOCKET BOLT	1	SUS304			
2A	FRONT CASING CHAMBER	1	PPG	385X226X175	A2273774	04-3	IMPELLER COVER	1	PPG	φ160X25	P2459026	7	HEXAGON SOCKET BOLT	1	SUS304			
02	SELF-PRIMING CHAMBER	1	PPG	245X60X15	A2173744	04-2	MOUTH RING	1	RULON	φ63X8	P2429006	6	HEXAGON SOCKET BOLT	6	SUS304			
01-2	FOOT	1	PVC	245X60X15	A2173744	04-1	IMPELLER NOUМЕНON	1	PPG	φ160X44	P2419024	5	HEXAGON SOCKET BOLT	6	SUS304			
01-1	TRANSITION FLANGE	1	FC-20	φ228.6X36.5	P2174306	04	IMPELLER ASS'Y	1	PPG	φ160X44	A2403784	4	HEXAGON SOCKET BOLT	6	SUS304			
01	BRACKET	1	FC-20	φ208X191	A2123769													



APPROVED	MDL. NAME	NH-405PW-N-CV	(NEMA)
CHECK	DWG. NAME	CONSTRUCTION	DRAWING
DESIGN	DWG. NO.	E2453628	A3
DR.BY	EDITION	03 20 06 BECKY	

TPW
HONG YUAN

PAN WORLD CO., LTD.
パンワールド株式会社