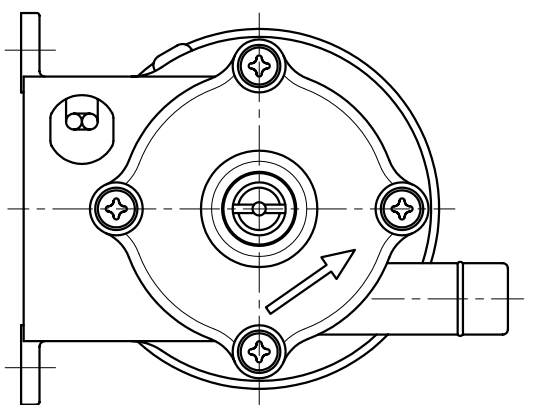
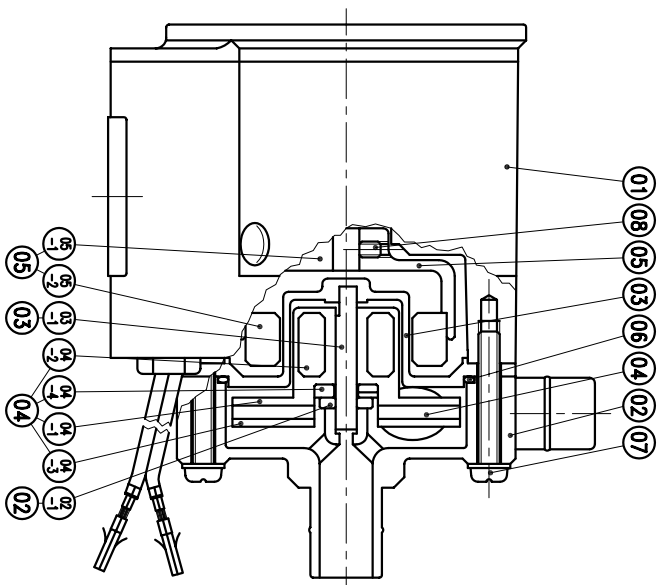


03-1	SPINDLE	1	CERAMIC	φ4X27	A2331603	05	OUTER DRIVE RING	1		φ41X26	P2501199	08	SET SCREW	2	S435	M3X4	P9111421
03	REAR CASING	1	PPG	φ54X20.5	P2301036	04-4	THRUST PAD	1	ROLON	φ12X2.5	A2321604	07	SCREW,GROSS RECESS HEAD w/L.P.W.(φ8Xφ4.3X10.8)	4	SUS304	M4X25	A9111026
02-1	FRONT THRUST PAD	1	CERAMIC	φ10Xφ4X2	A2221602	04-3	IMPELLER COVER	1	PPG	φ43X1.5	P2451213	06	O. RING	1	FKM	φ44.5Xφ2	S45
02	FRONT CASING	1	PPG	φ54X38	P2201034	04-2	INNER MAGNET	1	FERRITE	φ18X12	P2441115	05-2	OUTER MAGNET	1	FERRITE	φ38Xφ25X10	P2521094
01	MOTOR					04-1	IMPELLER VANE	1	PPG	φ43X21	A2411610	05-1	MAGNET HOUSING	1	ADC-12	φ41Xφ5X21	P2511004

NO	PART NAME	QTY	MATERIAL	NOTE	DWG. NO.	NO	PART NAME	QTY	MATERIAL	NOTE	DWG. NO.
----	-----------	-----	----------	------	----------	----	-----------	-----	----------	------	----------



G : 1/2"X 1/2"
NPT : 1/2"X 1/2"

APPROVED		MDL NAME	NH-5PX-Z-D
CHECK	11 25 03	DWG. NAME	CONSTRUCTION DRAWING
DESIGN	03 24 97	DWG. NO.	B2001511
DR.BY	11 25 03 BECKY		A3

TPW
HONG YUAN

PAN WORLD CO., LTD.
パンワールド株式会社